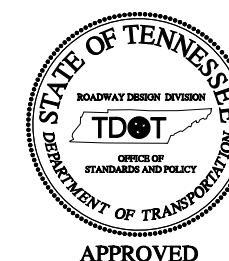
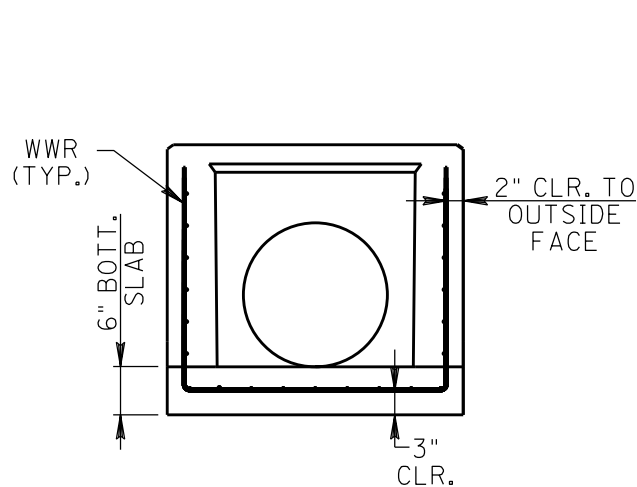


GENERAL NOTES

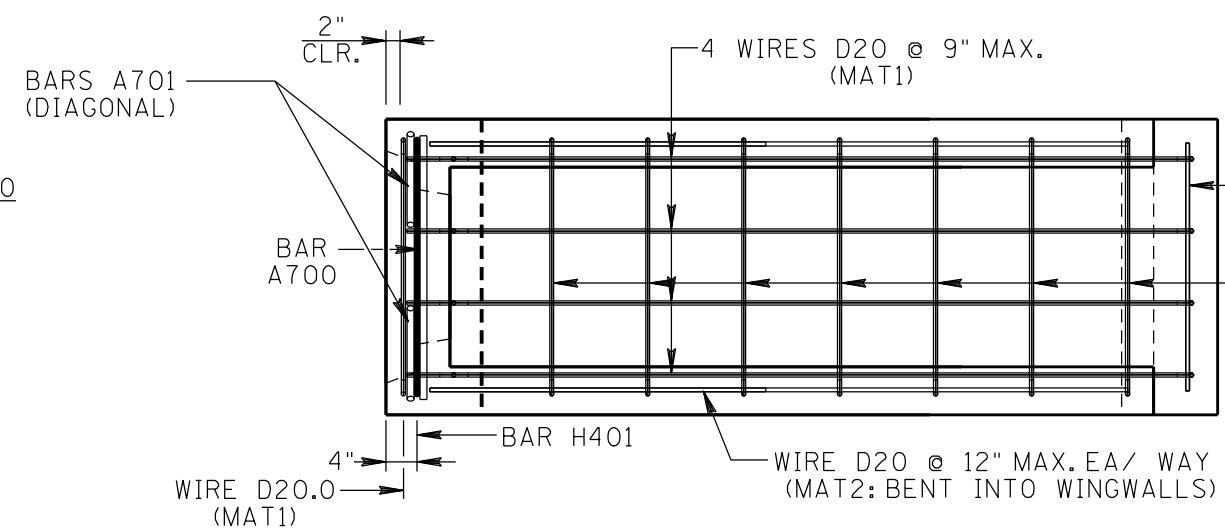
1. SPECIFICATIONS: TDOT 2015 EDITION WITH CURRENT ADDENDA.
2. DESIGN SPECIFICATIONS: AASHTO LRFD SPECIFICATIONS, CURRENT EDITION.
3. CONCRETE TO BE CLASS "A", $f'_c=4,500$ P.S.I.
4. REINFORCING STEEL PROVIDED AS RE-BAR TO BE IN ACCORDANCE WITH ASTM A615, $F'Y=60,000$ P.S.I./.
5. REINFORCING STEEL PROVIDED AS WELDED WIRE REINFORCEMENT (WWR) TO BE IN ACCORDANCE WITH ASTM A1064, DEFORMED WIRE WITH $F'Y-MIN=70,000$ P.S.I./.
6. WELDED WIRE REINFORCEMENT SHALL BE PROVIDED IN 2 CUSTOM MATS. THE TWO CUSTOM MATS SHALL BE BENT AS REQUIRED TO REINFORCE WALLS, HEEL AND TROUGH.
7. SEE TDOT STANDARD DRAWING NOS. D-PE-18A AND D-PE-18B FOR ADDITIONAL CONSTRUCTION REQUIREMENTS.
8. BAR BENDS FOR RE-BAR SHALL BE IN ACCORDANCE WITH CRSI MANUAL OF STANDARD PRACTICE.
9. BENDS FOR WELDED WIRE FABRIC SHALL BE IN ACCORDANCE WITH THE MANUAL OF STANDARD PRACTICE AS PUBLISHED BY THE WIRE REINFORCEMENT INSTITUTE.
10. DIMENSIONAL TOLERANCES TO BE IN ACCORDANCE WITH TDOT STANDARD OPERATING PROCEDURES (SOP), SECTION 5-3, PART 3.



1
OF 3



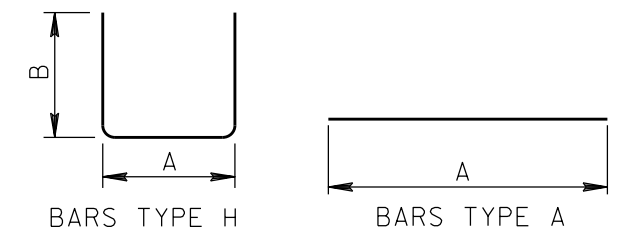
WALL SECTION
SHOWING CLEARANCES TO WELDED
WIRE REINFORCEMENT (WWR)



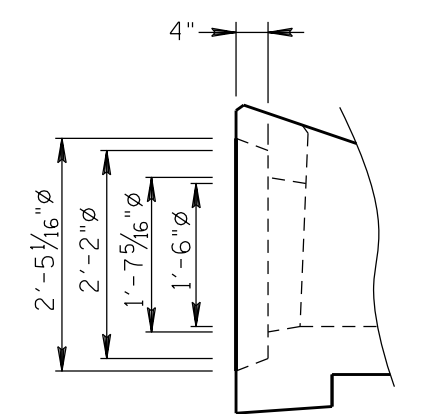
BOTTOM SLAB PLAN
4:1 SLOPE

BAR	NO.	DIM "A"	DIM "B"	LENGTH
H401	1	2'-9"	2'-8"	8'-1"
A443	2	8'-6 ⁵ / ₈ "	N/A	7'-11"
A700	1	2'-9"	N/A	2'-9"
A701	2	1'-2 ⁷ / ₈ "	N/A	1'-2 ⁷ / ₈ "

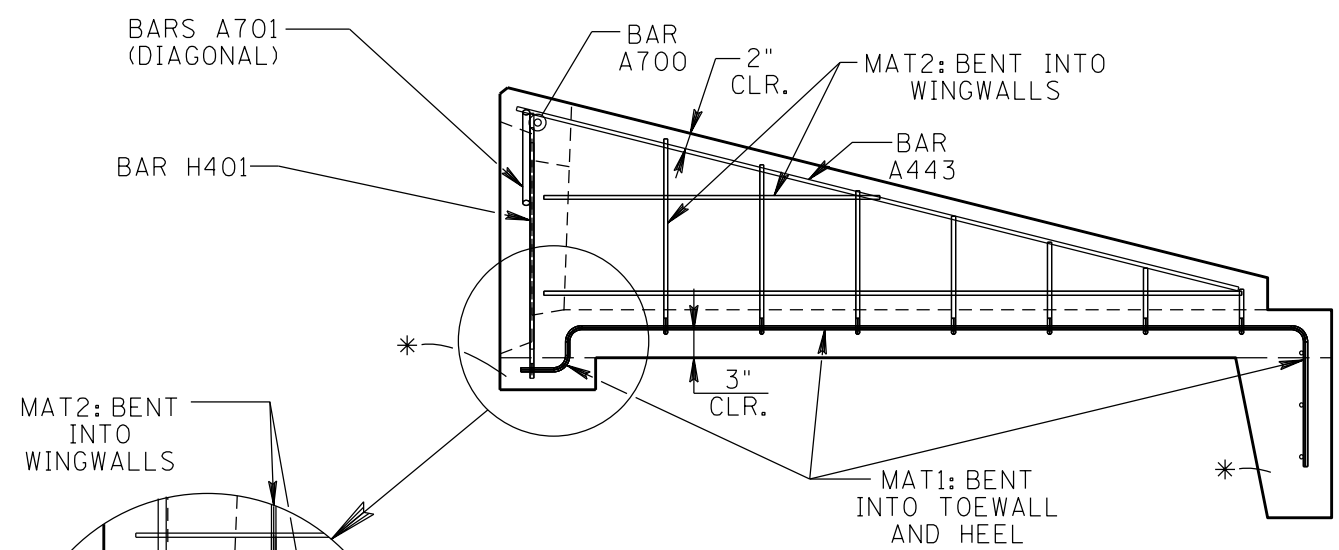
BILL OF
STEEL: RE-BAR



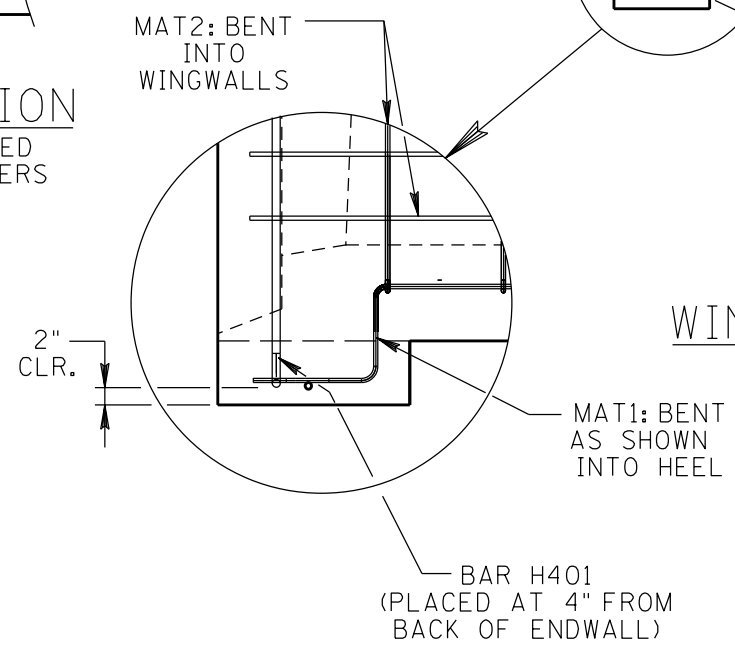
WIRE AREA EXAMPLE:
WIRE D20.0: DESIGNATES
DEFORMED WIRE WITH
AREA = .200 IN²/WIRE



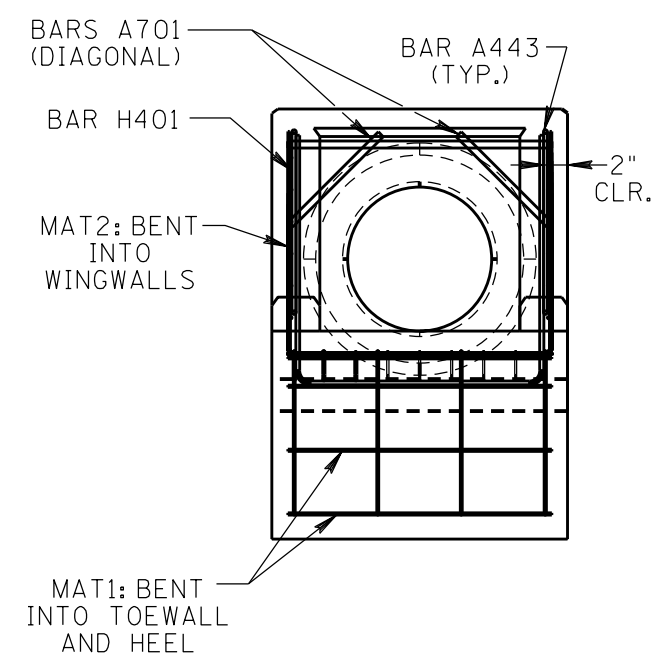
END SECTION
SHOWING STEPPED
OPENING DIAMETERS



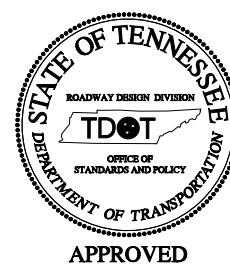
WINGWALL ELEVATION
4:1 SLOPE

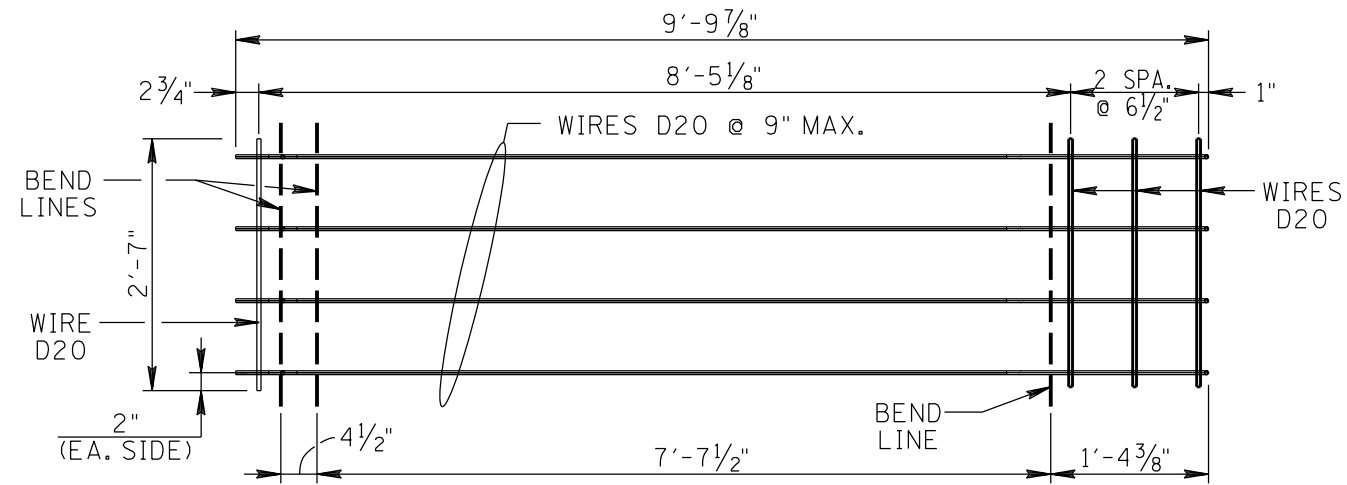


*: HEEL AND TOE ARE TO BE CAST
AS SECONDARY POURS ONTO
BOTTOM OF BOTTOM SLAB.

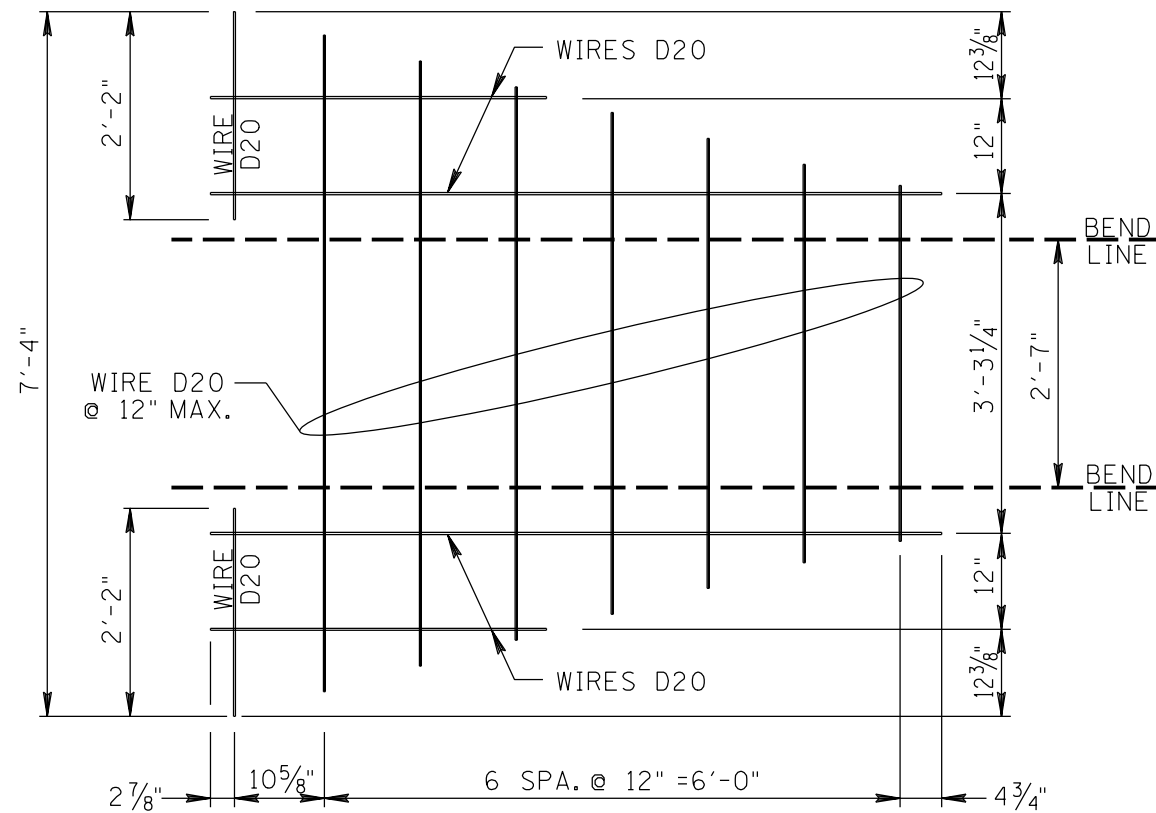


END ELEVATION
4:1 SLOPE

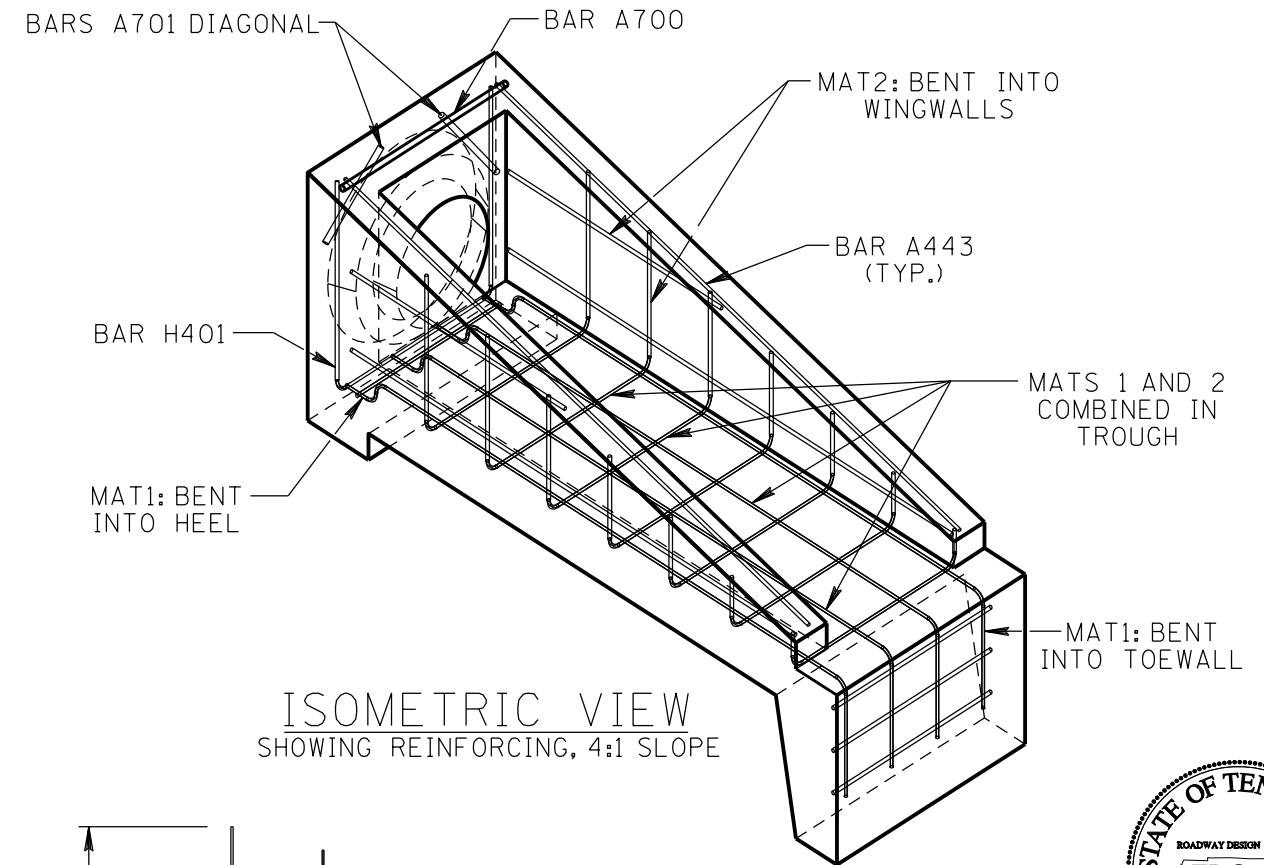




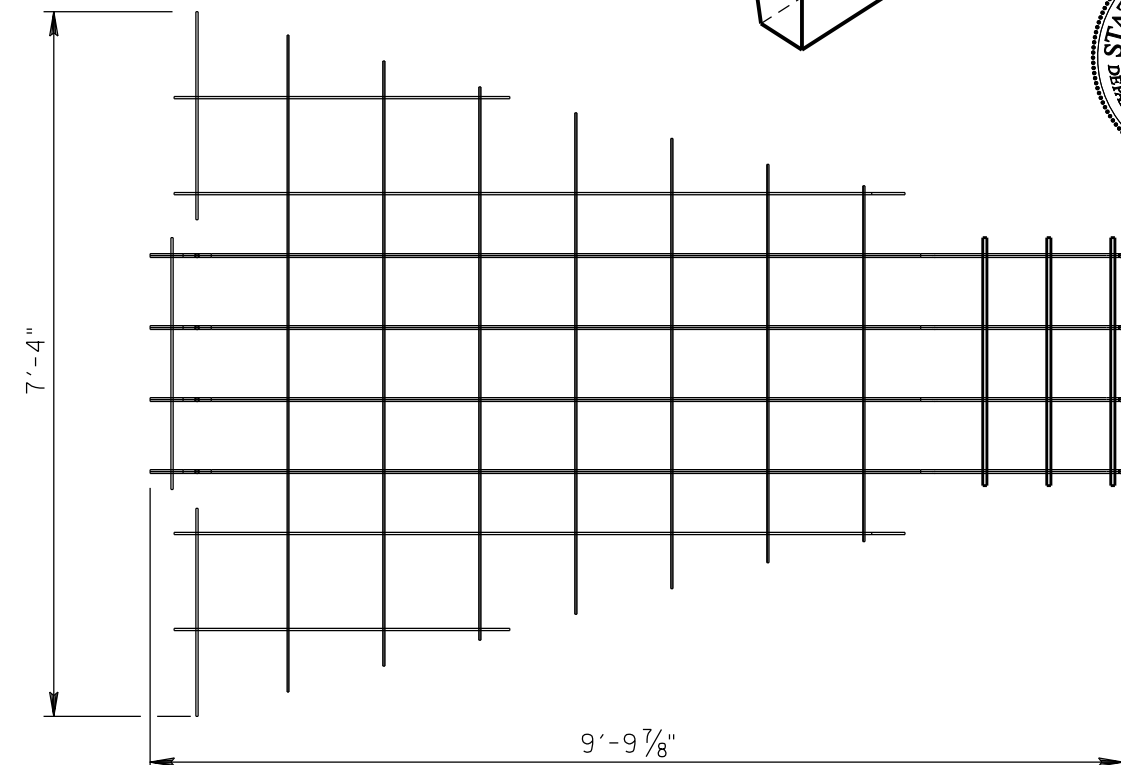
WWR MAT 1



WWR MAT 2



ISOMETRIC VIEW
SHOWING REINFORCING, 4:1 SLOPE



COMBINED MAT1 AND MAT2
(SHOWN WITHOUT BENDS)

